

Master Gardener Update

Happy New Year, Everyone! January 2023

In this Issue

Donating in the Digital Age

RPMGA:

Annual Potluck Returns

Garden Swap

Member Input

Board Elections

Dues Reminder

MG Program:

Last Chance to Enter Hours
 or Complete Onboarding
 Lite for 2022

Events for Fun

Education Events Coming
 Up in January and Beyond

The Realities of Donating in the Digital Age...Or Can I Really Trust That Website?

In today's digital age the Internet has become the equivalent of the public library, only you don't have to go anywhere to get there. It's a way to do research while wearing your jammies. There are literally millions of websites that offer information on everything from how paper bags are made, to how to grow a coffee plant in a pot in the Midwest.

One thing that has surfaced as part of the e-verse is fund-raising. Today's donations have stretched far beyond dollar bills dropped into a huge glass jar on the counter of the local coffee shop, or an envelope dropped into a locked box near the door of the organization's office. Today your Internet donation on what has come to be known as a "crowd-funding donation website" can change the lives of people you'll never meet, in countries you may



<p>Websites</p> <p>MGV Hours Reporting: mastergardener. extension.wisc.edu/ report-your-hours/</p> <p>Canvas UW Online Classroom: https://canvas.wisc.edu/</p> <p>RPMGA Blog: rpmga.blogspot.com</p> <p>RPMGA on Facebook: Hit control/click on this link: RPMGA on Facebook</p> <p>Rotary Gardens: rotarybotanicalgardens.org</p> <p>Wisconsin Master Gardener Program: mastergardener. extension.wisc.edu</p> <p>Wisconsin Master Gardener Association (WIMGA): wimga.org</p>	<p>never visit. Your donation could be used to drill a water well in sub-Saharan Africa, provide food and clothing for displaced victims of war in The Ukraine, or be used to rebuild the lives of a Wisconsin family that lost everything in a house fire. Thing is, who runs these sites, and how can you be sure where every penny of your donation goes?</p> <p>According to Forbes the top three sources that can help you find out if the website that is asking for donations is legitimate are:</p> <ol style="list-style-type: none"> 1. The Internal Revenue Service (I.R.S.) – On the I.R.S. website (https://www.irs.gov/charities-non-profits/tax-exempt-organization-search) you can see if the organization in question is listed as a 501(c)3. Make sure the charity is an actual charity. If you plan to declare your donation as a tax deduction, the charity must be a qualified organization. The I.R.S. has a searchable database of charities where you can verify that your organization holds this status. 2. Charity Navigator (https://www.charitynavigator.org/) – “Making a Difference Starts Here” – Find a charity that aligns with your beliefs and make a tax-deductible gift. 3. Guidestar.org (https://www.guidestar.org/) – “Connecting you with the non-profit information that you need” – Search GuideStar for the most complete, up-to-date nonprofit data available. <p>When searching to locate a charity that resonates with your desire to help – say, perhaps environmental concerns – there are a few simple criteria that you should consider.</p> <ul style="list-style-type: none"> • How much of your donation will actually go directly to the cause. Some charities stringently limit their administrative and fund-raising costs. The American Red Cross, for example, uses less than 10% of its budget for those kinds of costs, leaving them with 90% to benefit the people and programs they support. When looking for a charity, use the simple benchmark of a maximum of 30% administrative costs leaving 70% for the needy people and programs. Anything higher may not deliver your donation to the desired project. • Visit Give.org (https://give.org/), a Better Business Bureau Wise Giving Alliance website that gives you the skinny on whether or not any complaints kicking around the Internet about this charity or that are real or just sour grapes. <p>Americans are a generous people. We give because we want to help, and the dollar figures show the staggering results.</p> <p style="text-align: right;"><i>continues on page 12</i></p>
--	---

RPMGA Annual Potluck Returns

Bring a Guest and Come to Our Potluck Salad Luncheon, Saturday, January 14

You're invited to Rock Prairie Master Gardener Association's annual potluck. The board decided to try something a little different this year, so we're doing a luncheon, rather than a dinner (to avoid having to drive after dark) and a weekend so members who work will be more likely to be able to come. Some things, though, haven't changed. Bring a guest—or even two! Good company is always welcome. Bring a dish to pass—a salad or a dessert, please. RPMGA will provide an entrée (chicken salad with cranberries!). RPMGA will also provide coffee/water/plates/cups/utensils. We'll have a chance to catch up with each other and to get your input on what you'd like from RPMGA in 2023. We'll finish up with a garden swap (see below), so give some thought to what you have that you might like to share. Hope to see you there!

Date: Saturday, January 14, 2023

Time: 1-3:00 p.m.

Location: Basement Community Room at Premier Bank, 1400 Black Bridge Road, Janesville (behind the McDonalds on Milton Ave.)

Garden Swap at the Potluck

We did this a few years ago and it proved to be very popular. So we're doing it again! We've taken a look through RPMGA's shed and found a bunch of extra tools and other items that don't often get used. So we're bringing those. What do you have? Extra seeds? Books? Houseplants? Fun pots? Tools? Other equipment? **Bring along** anything garden-related in good condition that you are willing to see go to a new home. We'll try to find it one. It's always fun to get a glimpse into other gardeners' worlds. And you may find just the thing for you.



"DSC06423 baby shower luncheon" by [godutchbaby](#) is licensed under [CC BY-NC-ND 2.0](#)

Member Input

Time to make plans! At the potluck, we'll be discussing potential program topics and tour locations. One question we'd like to know the answer to: Should we revive plans this year for an overnight bus trip to **Seed Savers Exchange** and other locations in Decorah, Iowa? We were all set to start signing people up in 2020 when Covid derailed those plans. Is this something we'd still like to do? Please also think about what **gardening topics** you're most interested in right now. Do you have plans for a new type of garden? Do you have a particular problem you need to solve? Have you heard a speaker that you find especially interesting or inspiring? Is there a garden in the area you've

wanted to visit? We have some ideas, but we'd like yours. If you can't make the potluck, we'd still like your input: please email your ideas to anyone on the board (email addresses at the end of this newsletter).

Board Elections: Vote In-Person at the Potluck or Online from January 15 to 21

Two positions on RPMGA's board are up for election this month: President (Ruth Flescher) and Secretary (Sue Wood). Both Ruth and Sue are willing to stand for reelection. No other candidates have stepped forward so far. If you are interested in serving on the board, contact any current board member (email addresses at the end of this newsletter). Don't feel like stepping forward would insult either Ruth or Sue. We'd love to see others get involved! We will also ask for nominations from the members at the potluck. Any member attending the potluck can vote in person. The week following the potluck we'll have an online voting option with information coming to your email inbox when voting opens.



RPMGA/WIMGA Dues Reminder

If you haven't sent in your dues for 2023, please mail them to treasurer Deb Grams: \$15 for RPMGA plus \$5 if you also want to renew your Wisconsin Master Gardener Association (WIMGA) membership. If you can't find the form, contact Deb: debgrams@yahoo.com.



MG Program Note: Last Chance to Enter 2022 Hours or Complete Onboarding for 2022

You still have through January 9 to enter your volunteer and education hours into the Online Reporting System (ORS). To be able to count hours for 2022, you must have completed all 7 modules and all 5 quizzes in the Onboarding Lite course in the Canvas classroom. *Follow the directions in the December 2022 Volunteer Vibe (in your email December 21st) to check if you successfully completed Onboarding Lite.* IF YOU HAVEN'T, you can still complete Onboarding Lite by midnight on January 9 and have your 2022 hours count. Midnight on January 9 is also the drop dead deadline to get your 2022 hours entered.

If you haven't completed Onboarding Lite by January 9, your 2022 hours won't count and your MG status for 2023 will be listed as Inactive. You'll remain in the program, but to change your status to Active or Certified, you will have to take the Onboarding Lite course in 2023—and it has to be done *before* you can count any volunteering you do in 2023. No volunteering you do before your Onboarding Lite completion date will count.

Need Help? If you're having trouble entering your hours in ORS, you can contact Ruth Flescher (yafello2@gmail.com) or Mary Thompson (mastergardenermary@gmail.com) for assistance.

Events for Fun

Nicholas Conservatory Sinnissippi Station Garden Railway Exhibit, Rockford, IL

This display and related events began in December but also continues through January 29. The Conservatory is open 10:00 a.m.-4:00 p.m. Tuesday through Sunday (closed Mondays). Admission is \$10 or less. You can find the details at <https://nicholasconservatory.com>



Garden and Landscape Expo, Feb 10-12, 2023, Alliant Energy Center, Madison

A trip to Garden and Landscape Expo can be a great start to the growing season. The exhibits are a lot of fun. There's also UW-Madison Extension Horticulture experts, a floral design competition, Nature Cat's Backyard and more. And of course, more than 125 educational sessions, all included with your admission. Many of those can be counted for MG education hours. The schedule is set, so you can click this link to start planning your trip: [2023 Garden & Landscape Expo educational schedule](https://wigardenexpo.com/tickets/). Discounted entry tickets are also available now, both online (<https://wigardenexpo.com/tickets/>) and at participating retailers, including Rotary Gardens. Did you know you can also volunteer at Garden and Landscape Expo? As thanks, you'll receive a free one-day admission ticket AND a free parking pass good for the day you volunteer. Not all the volunteer tasks meet the guidelines for MG volunteer hours, but some do. For more on volunteering, go to <https://wptschedule.org/Volunteer/event.php?ilDEvent=18> All proceeds from Garden and Landscape Expo benefit PBS Wisconsin.



2023 (IL) Extension Master Gardener Seed Expo, Saturday, February 4, 10:00 a.m.-2:00 p.m., Round Lake Beach, IL

This event is a bit of a drive, but if you're looking for something to brighten up a dreary winter weekend (and you can't travel someplace tropical), this just might be the ticket. A combination of garden expo and seed swap, Seed Expo is co-sponsored by the local Master Gardener Association and the town's public library. Free and open to all. You don't have to bring any seeds to get some. Location: Village of Round Lake Beach Cultural & Civic Center, 2007 N. Civic Center Way, Round Lake Beach, IL (Note: Round Lake Beach is in northeastern Illinois, between Fox Lake and Waukegan.)

Education Events Coming Up in January and Beyond

Looking for Level 2 MGV training--The Plants Plus modules? You can find them in the online classroom, Canvas, which you access with your UW NetID at <https://canvas.wisc.edu/> As of now, Plants Plus modules are ONLY available in Canvas. Check regularly for new modules!

Olbrich Botanical Gardens, Madison, WI

Classes are in person at the Gardens unless otherwise noted. Fees listed are for Olbrich Members/General Public. For more info, copy and paste this address: <http://www.olbrich.org/education/classes.cfm> Note: Not all classes offered at Olbrich meet the guidelines for acceptable education hours for the MG program. We have left out any that are clearly unacceptable. Yet those programs may be of interest to you! So do take a look at all their listings at the address shown here.

If a class is shown as “filled,” you can ask to be put on a waiting list. Cancellations do occur.

January 12, Healthy Houseplants, 5:30-7:30 p.m., \$18/\$22, **online**. Register by January 5.

January 19, Weather Basics: Winter Weather, 6-8:00 p.m., \$10/\$12. Register by January 12.

January 20, Native Plants for Formal Gardens, 1-3:00 p.m., \$19/\$24, **online**. Register by January 12.

January 24, Gravel Gardens—Gardens that Rock!, 6-7:30 p.m., \$22/\$28. Register by January 17.

January 28, Perennials that Stand Up for Themselves, 11:30 a.m.-1:00 p.m., \$12/\$15, **online**. Register by January 17.

February 1, Common Butterflies of Wisconsin—Swallowtails, 6-7:00 p.m., \$14/\$18, **online**. Register by January 25.

February 6, Creating and Maintaining Meadow Gardens, 6-7:30 p.m., \$22/\$28. Register by January 30.

February 7, Tips and Tricks for Aspiring Herbies, 6-7:30 p.m., \$18/\$22, **online**. Register by January 31.

February 8, Secret Ingredients to Olbrich’s Annual Containers, 6-7:15 p.m., \$14/\$18, **online**. Register by February 1.

February 9, All About Jumping Worms, 5:30-7:30 p.m., \$18/\$22, **online**. Register by February 2.



Gravel Garden at Olbrich Botanical Gardens in Madison

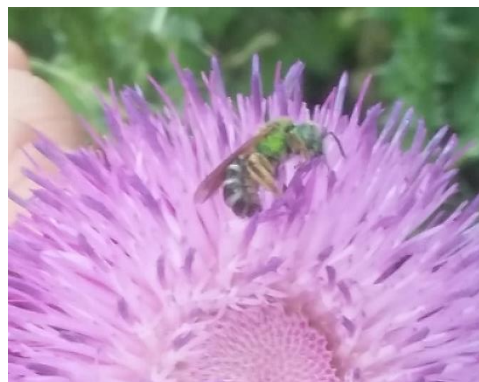


Plant Quest 2023, Michigan State University Extension, Monday evenings, January 9-30, 5-6:15 p.m. CST, online

If you are on the hunt for perfect perennials, amazing annuals, juicy vegetables or natives to nurture... PLANT QUEST's line up of nationally known speakers is going to thrill you! The series presenters discuss outstanding plants and new introductions for the upper Midwest in a different topic area each week: woodland/shade plants, new and exciting vegetables, color in the ornamental garden, and alternatives to lawns. You can attend the live presentations or watch the recordings at a later time. This webinar series is going to warm your winter with visions of beautiful plants and gardens. Fee: \$40 if you register by Jan 8, \$50 after Jan 8. Time: 5-6:15 p.m. CST. Register any time before January 29th. You will then receive notification of all live and recorded sessions. (Recordings will be available till June 1.) Register at <https://events.anr.msu.edu/PlantQuest2023/>

Landscape Design 101, Tuesday, January 17, noon-1:00 p.m., Edgerton Hospital, Edgerton, WI

Mark Dwyer will discuss some of the basic considerations when evaluating a landscape for improvement. Discussions will focus on the best approach to follow when assessing a new or older landscape for a landscape design that looks beautiful and works for you. Free. Registration encouraged, but not required. Sign up at <https://www.edgertonhospital.com/events/2023/january/landscape-design-101-coffee-chat/>



Native Bees of Wisconsin, Tuesday, January 17, 6-7:30 p.m., online

Wisconsin is home to 500 kinds of native bees! Discover the diversity and life histories of these important pollinators. The UW-Arboretum's Native Plant Gardener, Susan Carpenter will help you learn how you can create and manage habitat for them, using native plants and bee-friendly gardening practices. This is a free, virtual talk hosted by the Woodland Dunes Nature Center. To register, please call 920-793-4007 or email Jess at jessicaj@woodlanddunes.org for the link to the presentation.

Beneficial Insects—Beyond Pollinators and Caterpillars, Wednesday, January 18, 6-7:00 p.m. CST, online

Hosted by Wild Ones Red Cedar Chapter. The Guest Speaker will be [Andrew Jones](#), research technician in the Department of Entomology at Michigan State University. We have all heard how important pollinators are to our food sources, but insects provide many other services beyond pollination. Join us to learn more about how these small creatures provide big benefits. This meeting will take place on Zoom. Free and open to the public, but registration will be required. Sign up information coming soon to <https://wildones.org/events/#event-6a3571da-7fba-11ed-ba32-ac1f6bdb9bb4>

Seed to Kitchen Vegetable Variety Trials, Saturday, January 21, 10-11:30 a.m., online

How do UW breeders make vegetables taste better? Learn about the breeding work of UW associate professor Julie Dawson and the Seed to Kitchen Collaborative. SKC connects plant breeders, farmers, gardeners and chefs to improve flavor and quality of organic vegetables. It serves to evaluate new and soon-to-be-released varieties for culinary traits and performance in farms and gardens. The collaborative also includes a network of farmers and gardeners helping to develop new varieties of tomatoes and peppers with independent plant breeders in the Midwest. Program is part of the Friends of Allen Centennial Garden's 2023 Winter Class Series. Fee: \$15 Register by clicking this link: [January 21, 2023 \(Virtual Presentation\)](#)



Fundamentals of Plant Diseases, Wednesday, January 25, 6:30-9:00 p.m., online

Learn about disease organisms and the symptoms they cause, as well as information on environmental factors that favor disease development. Also learn about disease-like disorders caused by non-biological factors such as nutrient imbalances, pesticide exposures, environmental pollutants and adverse environmental conditions. Free, but registration required. Register at pddc.wisc.edu...

Growing Epic Tomatoes, Thursday, January 26th, 6:30 p.m., online

The Wisconsin Master Gardener Association's (WIMGA) Continuing Education Committee presents author Craig LeHoullier talking about every home gardener's favorite vegetable (or fruit): the tomato. Watch your email for more information and to sign up.

**From Seed to Farmer to Table – Lessons Learned Along a Food Justice Journey,
Saturday, January 28, 10-11:30 a.m., online**

As Executive Director of REAP Food Group, Phillip Kauth's role is to lead the organization's efforts to grow a sustainable and environmentally sound food system by building farm-to-school and farm-to-business connections involving producers, consumers, community members and policy makers. Phil holds a PhD in Horticultural Sciences and worked previously for eight years with Seed Savers Exchange in Iowa. This program is part of the Friends of Allen Centennial Garden's 2023 Winter Class Series. Fee: \$15 Register by clicking this link: [January 28, 2023 \(Virtual Presentation\)](#)

Megan Cain Presents: Your Garden Can Feed You All Year, Monday, January 30, 6-7:30 p.m., online

With the right planning you can eat food from your garden all year long. This fun and interactive workshop will teach you how to have your earliest harvest ever in spring, keep the momentum going in summer through succession planting, and have a robust fall garden that feeds you all the way to holiday gatherings. Using simple techniques, you can extend the fruits of your labor into more months of the year so you're getting the most food possible from your garden. Megan Cain is setting out to create a legion of gardening addicts that successfully and passionately grow their own food. Through her gardening education business, The Creative Vegetable Gardener, she helps people get more from their gardens by first mastering the essentials and then indulging in the colorful details that make gardening not just a favorite pastime, but a lifestyle. Klehm Arboretum in Rockford is offering this program. Free, but registration is required. Go to https://us06web.zoom.us/webinar/register/WN_A-ODzgpTQiBda6ylPfiZg



Pruning Shade Trees, Tuesday, January 31, 1:30-2:30 p.m. online

Proper pruning ensures that long-lived woody plants remain healthy and structurally safe in the home landscape. Many homeowners skip this important maintenance task due to uncertainty surrounding how, when, and where to make pruning cuts – which can vary based on a tree's age. Unravel the mystery of pruning shade trees as we cover basic pruning cuts, the all-important practice of young tree pruning, and how to care for and prune mature trees. Presenter: [Ryan Pankau](#), Extension Horticulture Educator. Free, but registration is required. Go to: [Register](#)

Landscape and Grounds Maintenance Short Course, Wednesdays, February 1-22, 1-3:30 p.m., online

Presented by UW experts through Dane County Extension, this series is aimed at green industry professionals but there's a lot here for home gardeners as well. Topics include insect pests, woody plants for screening, crabgrass control, prairie planting, native plants, oak wilt and planning for tree damage from ice storms. Fee is \$55/entire series or \$25/single date. The sessions will NOT be recorded. Register by the Friday before the presentation. For details and to sign up, go to <https://dane.extension.wisc.edu/2022/12/16/2023-landscape-and-grounds-maintenance-short-course/>

Addressing Invasive Species in a Changing Climate, Thursday, February 2, 9-10:30 a.m., online

Virtual lecture by Carrie Brown-Lima, Director and Senior Extension Associate, New York Invasive Species Research Institute, Cornell University. Fee: \$10. Advance registration is required by January 29. Go to <https://arboretum.wisc.edu/learn/adult-education/winter-enrichment/winter-enrichment-registration/> for information on registering. (On December 31, link says registration will open soon.)

BIPOC Foodways: From Africa to Madison with Yusuf Bin Rella, Saturday, February 4, 10-11:30 a.m., online or in person at UW-Madison Horticulture Building

Join Yusuf Bin Rella, Chef at UW-Madison DeJope Residence Hall, and Co-founder of TradeRoots Culinary Collective, on a personal journey from Madison, WI to West Africa and from garden to kitchen! Yusuf labels himself as a culinary genealogist, connecting to his ancestors through food and cooking. Yusuf is also an avid gardener, creating gardens that feature diverse traditional and ethnic food systems and farming practices as part of TradeRoots, a Madison-based group of farmers and chefs with roots in Wisconsin and West Africa. Yusuf consulted on the design and planting of Allen Centennial Garden's African diaspora garden this past summer (above) and an urban garden at the state capitol featuring plants like Kwanzaa corn, eggplant, collards, and celosia. This program is part of the Friends of Allen Centennial Garden's 2023 Winter Class Series. Fee: \$15 Be sure to select the ticket for the way you wish to attend: in person in Madison or online. (Location information is available at the registration link.) Register by clicking this link: [February 4, 2023 \(Virtual and Live Stream from Horticulture Building, UW-Madison\)](#)





27th Annual Stateline Fruit and Vegetable Growers Conference, Monday, February 6, 9:00 a.m. – 3:45 p.m., NIU campus, Rockford, IL

This conference is geared towards growers selling directly to consumers at farmers markets, orchards, pick your own operations, etc. Some of their topics this year may also be beneficial for new/beginning growers. In addition to the keynote speaker, there will be four breakout session times, each with a fruit and a vegetable topic. Fee: \$35. Address: 8500 E. State Street, Rockford, IL. Registration deadline: noon on February 3. For more details or to register, go to <https://web.extension.illinois.edu/registration/?RegistrationID=26772>

Green Thumb Gardening – Winter Vegetable Series 2023, mostly Mondays, 6:00-8:00 p.m., online

The Green Thumb Gardening class series gives you the practical knowledge to keep your home garden thriving! Dane County Extension educators and local horticulture experts will provide in-depth and accessible information for everyone from the novice to the experienced gardener. Register for individual classes at \$12 each or \$80 for the full series. [Click Here to Register](#) or to see topics for the rest of the series. Zoom links will be provided after registration.

January 9 (Monday): Seed Starting

January 19 (Thursday): Organic Vegetable Garden Planning

January 23 (Monday): Vegetable Garden Crop Care and Specialized Gardening Techniques

January 30 (Monday): Vegetable Diseases

February 6 (Monday): Weed Management in Vegetable Gardens



Plant Diagnostics: the Step-by-Step Approach to Identifying Plant Problems, February 1-December 31, 2023, online

This self-paced, 13 module-course explains the basics of the plant diagnostic process in an easy-to-understand way. At the end of the course, you'll be able to explain the steps of the diagnostic process and identify appropriate unbiased, research-based resources to use in the diagnostic process. After you've finished this course, we hope you feel empowered to attempt diagnostics with your own plants using the framework you'll learn in this course, accessing the resources we'll share with you, and using UW-Madison Division of Extension diagnostic services and labs for extra help when you need it. This course is moderated from February 1 to April 30, then remains available for you to work on at your own pace through the rest of 2023. Fee: \$49 for WI Extension Master Gardeners (or people in Onboarding 2023), \$99 for the general public. Register by January 31 at <https://hort.extension.wisc.edu/plant-diagnostics-course/>

Donating in the Digital Age...Can I Really Trust that Website? *continued*

According to Giving USA 2019, a study of charitable giving in the United States, the sources of funds donated to charities are as follows:

Rank	Source	Total Giving	% of Total Giving
1	Individuals	\$309.66 Billion	69%
2	Foundations	\$75.69 Billion	17%
3	Bequests	\$43.21 Billion	10%
4	Corporations	\$21.09 Billion	4%

*NOTE - This chart does not include government grants, which are technically contracts to perform a service, not a charitable gift. Fundraising is just one of several revenue sources for a nonprofit organization. Additional revenue can come in the form of grants from government agencies, endowments, and sales and services. Income from endowments is not strictly fundraising but rather the fruits of the investment of previous fundraising.

When a pop-up asks you to donate to a cause you never heard of before, but sounds like something you'd like to help with, stop. Take a deep breath, and before you send your critical account information into the blackness of the e-verse, check the organization that is asking. Recently I received a request for a donation from a political organization that claimed to be something that appeared to mirror my political views. It was asking for funds to support a bill that is currently languishing in Congress. The request claimed that the chairman of the organization was a highly placed Congressman in the House, a claim that I soon found to be patently false. It took me less than 5 minutes to find the truth.

Unscrupulous individuals not only want your money, they also want your account numbers, routing numbers, and other critical information that could give them access to your funds. There is a thriving market in stolen banking information.



Rainforest Coalition in Costa Rica



International Humane Society in Ukraine

To find out details about any organization that is asking for money, check first. Political donations are big business, and so are associated scams. Use websites like these:

Snopes.com – My go-to for most anything that gives me the willies.

PolitiFact – This organization was awarded a Pulitzer Prize for National Reporting in 2009.

FactCheck.org – While their focus is largely political, they will dive into investigations on most any questionable assertion. They have won several Webbys for their work.

ProPublica – Has been awarded several Pulitzer Prizes for public service, explanatory reporting, national reporting and investigative journalism.

Open Secrets – Main stream media often cites this organization due to their accuracy in reporting.

There are other organizations that have proven themselves to be honest and meticulous in their research. Spend some time on the Internet familiarizing yourselves with newspapers and periodicals that have reputations for honesty and integrity.

While donating to save the rain forest, or airlift hundreds of abandoned animals out of the Ukraine to safety, or give to provide food to the hundreds of thousands of souls who are living in refugee camps – driven out of their countries by drought and starvation, think first. Make sure how much of your donation will go to the intended recipients, and make sure you keep your own finances safe in the meantime. Donate – it's who you are – just do it wisely.

Written by Mary Kay Thompson

Right: Dona Iliana Melgar, Women in Forests/Rainforest Alliance/Guatamala Maya Biosphere Reserve



Children fed by Sudan Relief Fund



Reforestation in Borneo RainforestTrust.org



Ukrainian Red Cross Volunteers

The **Master Gardener Update** is developed by and distributed online monthly by the Rock Prairie Master Gardener Association, Incorporated, for master gardener volunteers and other interested people who have ties to Rock County, Wisconsin. Current officers of the association include Ruth Flescher, president (yafello2@gail.com); Mary Kay Thompson, vice president (mastergardenermary@gmail.com); Sue Wood, Secretary (wood-slibrarymedia@gmail.com) and Deb Grams, treasurer (debgrams@yahoo.com).

Mailing Address: Rock Prairie Master Gardener Association, c/o Sue Wood

1616 Holly Drive
Janesville, WI 53546