

In this Issue

No Mow May

RPMGA:

Edgerton Hospital Healing
Garden Tour Rescheduled
Spring Ephemerals Walk
Bylaws Vote: June 2
Rotary Garden Tour in July
May Coffee Chat
Congrats to Bev Feltz!

Rotary Gardens:

What's in Bloom? Tour
Volunteer Opportunities

Events for Fun

Plant Sales
Other

More Training Coming Up in May and Beyond

No Mow May

Winter is gone. Spring is here. The lazy drone of lawn-mowers has begun to fill the air in neighborhoods all over the state, but when May comes, that sound will fall silent in a number of communities across Wisconsin. In fact, the phenomena may occur at scattered locations around the country. The communities which are observing No Mow May – are acting in concert by agreeing to a voluntary cessation of mowing to protect our most vulnerable insects – pollinators.

The initiative didn't begin in the United States. It first surfaced in the U.K., but Appleton was the first U.S. city to get involved, soon to be followed by Wausau, Oshkosh, Fort Atkinson and Stevens Point. This year those communities have been joined by yet more - La Crosse, Wisconsin Rapids, De Pere, Green Bay and others. No Mow May is really a remarkably simple thing to do. Or not do. Those who choose

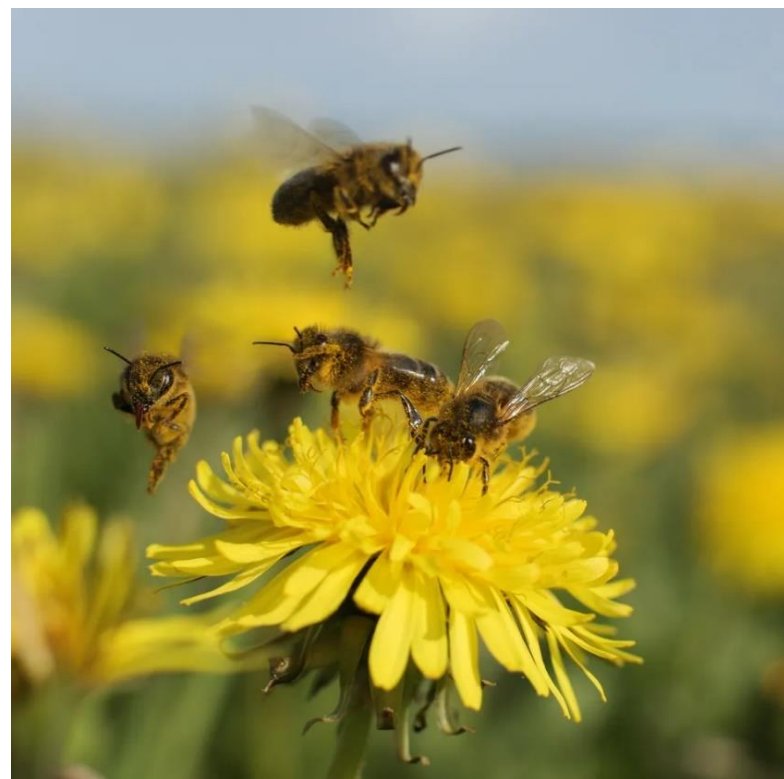


Figure 1- Dandelions are one of the first flowers to bloom in spring. Food for bees.

Websites

MGV Hours Reporting:
mastergardener.
extension.wisc.edu/
report-your-hours/

**Canvas UW Online
Classroom:**
<https://canvas.wisc.edu/>

RPMGA Blog:
rpmga.blogspot.com

RPMGA on Facebook:
Hit control/click on this
link:
[RPMGA on Facebook](#)

Rotary Gardens:
rotarybotanicalgardens.
org

**Wisconsin Master
Gardener Program:**
mastergardener.
extension.wisc.edu

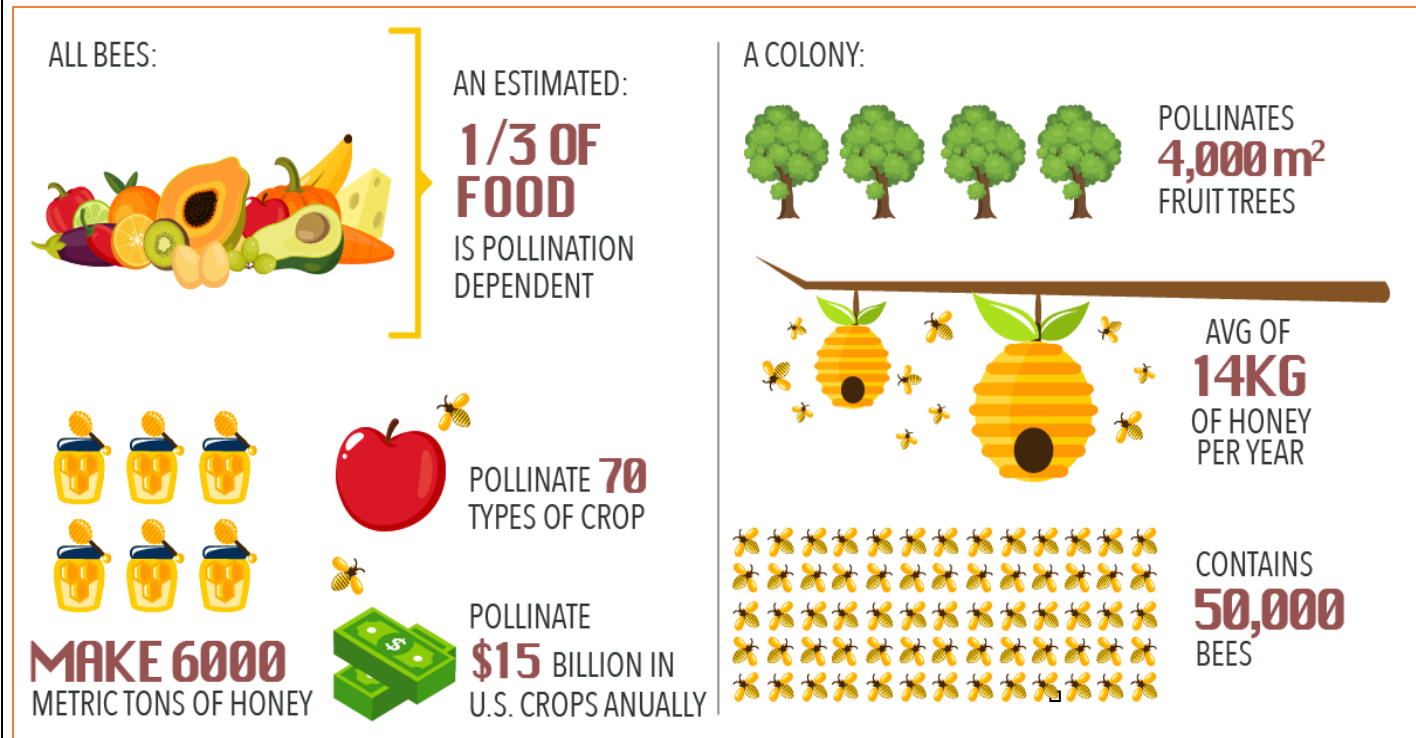
**Wisconsin Master
Gardener Association
(WIMGA):** wimga.org

to get involved simply park their lawnmowers for the entire month of May.

Pollinators wake up hungry. No Mow May has the potential to give them a much-needed source of food – many early spring plants, like dandelions, provide spring’s earliest pollen and nectar for bees and other pollinators. Not mowing these plants down allows them to blossom and literally rings the dinner bell for pollinators. Pollinators spread pollen from plant to plant and fruits are the result.

Why should we participate in this initiative? Bees need our help. Studies have shown steep declines in wild bee populations. The United Nations has characterized the decline as a threat to the global food supply.

continues on page 15



RPMGA Notes

Tour of Edgerton Hospital Healing Garden, **now resched- uled for Friday, May 20, 10:00 a.m. at the Hospital**

First the season and the rain, and then Covid, delayed our tour of the Edgerton Hospital Healing Garden. But we're ready to try again! Mark Dwyer remains enthusiastic about sharing the changes he's made since taking responsibility for the Healing Garden, and sharing the lovely display of bulbs that was planted last fall. In addition to the floral display, Dwyer will talk about plans for the garden, new areas and how the space can be used to greater effect.



Edgerton Hospital is located off Highway 59, just west of Interstate 90. We'll meet there on the 20th for a 10:00 a.m. tour. Dwyer suggests parking in front of the SSM/Dean wing of the building, and walking around the building to the left, following the green Healing Garden signs. Yes, you'll walk past some dumpsters, but look beyond for the pavilion and join us there. (Note: if you need to enter the building for rest rooms or any other purpose, masks are still required along with a temperature check.)

Spring Ephemerals Walk Moved to **New Location and Date: Tuesday, May 10, 6:00-7:30 p.m.**

The weather strikes again! The Walworth County Master Gardener Volunteer Association's planned walk in the Beulah Bluff Preserve had to be put off because there weren't any spring beauties to be seen. The new date is May 10 and the new location is Petersen Island Woods Preserve at the east end of Oak Park Rd, Elkhorn. The walk will be led by Rory Klick of the Kettle Moraine Land Trust. Dress for the weather and bring tick repellent. Meet at the parking spaces at the end of Oak Park Road, and enter the preserve trail at the brick platform. Parking is limited, so car pool if possible. **PLEASE RSVP to Sue Leedle if you plan to attend.** jsleedle@oawl.net

Reminder: Bylaws Vote to Take Place June 2

The meeting to vote to approve the suggested bylaws revisions will probably be a combination of in-person and Zoom meeting. Watch your email or the RPMGA Facebook page for details.



Coming in July: Guided Tour of Rotary Gardens

Coming up in July, Walworth, Jefferson and Rock County MGVs have an opportunity to take a guided tour of Rotary Botanical Gardens with master gardener Art Hilker. Art has been volunteering as a tour guide for the gardens for the last 15 years, so he's watched the recent changeover in the Gardens to a more sustainable focus (more perennials, fewer annuals). He knows the history of the gardens and he's ready to interact with us about that, the physical aspects of the garden, some of the more interesting plants (including a special dahlia garden this year), plus how the gardens provide therapeutic benefits. This year's garden art display of turtles will be on view as well. Art is looking forward to getting stories and insights from other master gardeners as well, making the tour an interactive event.

Two dates to choose from: **Tuesday, July 12 OR Thursday, July 14.**

Time: plan to arrive around 9:45 so we can all check in. The tour begins at **10:00 a.m.**

Fee: You pay only for garden entry. Free to RBG members, \$7 for seniors or \$9 for adults.

Tram Available: Art has reserved the Tram for both dates, so if you have difficulty walking or if you get tired along the way, you can hop a ride. Space is limited to 20 people per tour. First come, first served, so sign up soon to assure your place. **Email Ruth Flescher** (yafello2@gmail.com) with the date you plan to come.

New Time for Next Coffee Chat: Tuesday, May 10, 1 p.m. online

Don't forget this month's virtual coffee chat with Rock, Jefferson and Walworth county MGVs. It's a great place to hear the latest, meet MGVs you may not know, and generally feel more connected. Julie Hill sent out an email with the link to the Zoom session on April 28. Hope you can be there!

Congrats to Beverly Feltz for Earning Honored MGV Status!

Honored status is a new form of recognition for the master gardener program and we're pleased to congratulate our own Bev Feltz as one of the first to gain this acknowledgement of her hours and years of service. Though she and her partner Ruth Oren have moved to Utah, she's still an RPMGA member—and we hope she remains connected to her Wisconsin friends for years to come!

Rotary Gardens Next “What’s in Bloom? Tour” Wednesday, May 18, 6-7:00 p.m.

Rotary Botanical Gardens Director of Horticulture, Michael Jesiolowski will provide a behind-the-scenes look at what’s blooming this month and answer any questions you may have. What’s in Bloom? Tours take place on the 3rd Wednesday of the month (April- August) and the 4th Wednesday of September. The tours are free for RBG members, or \$10 for non-members. To register, please call 608.752.3885 or sign up in person on the day of the tour.

Coming in June: Pollinator Gardens Talk During Pollinator Week

Pollinator Gardens provide food and shelter for pollinators while providing reproductive benefits to flowering plants. This program, presented by RPMGA member Ann Pedder Reilly, will discuss pollinator birds and insects you are likely to see and the plants that will attract them from spring through fall. We will explore the fit between pollinators and plants and will walk through the gardens to observe their interactions. This program includes educational materials for creating your personal pollinator garden. Wednesday, June 22, 5:30-7:30 p.m. \$10 for RBG members/\$17 for the general public. Register online by June 20 at <https://rotarybotanicalgardens.org/event/pollinator-gardens/>

Rotary Gardens Volunteer Opportunities

General Garden Volunteers tend beds, help plant and weed, water, and more. Please sign up at <https://signup.com/go/kJZRkCp>

Garden Ambassadors needed for Tuesday evenings, Saturday afternoons and evenings, and Sunday afternoons. Additional **Tour Guides** wanted for the many tours that are being booked for this year. You don’t have to be an expert on the Gardens or the plants to fill these positions. Please let Carla Edgar know if you are interested in becoming an Ambassador or Guide. **Saturday Work Days** will begin soon. No sign-up needed for these, just show up at the Horticulture Center on a Saturday morning and get put to work getting the gardens in shape. Watch for announcements about when the work days begin. You can contact Carla with any questions about volunteering at Rotary: volunteer@rotarygardens.org



Other Volunteer Opportunities

Nature at the Confluence Wednesday Workdays begin May 4 and continue through the summer. Hours: 10 a.m. till noon. Drop in as the “Green Team” gets busy taking care of the land. They invite you to join in whenever you can! You might work on pulling garlic mustard or other invasive plants, or you might work in the Pollinator Garden and Learning Gardens. You might also work on trail maintenance. Bring your own gloves. They supply water and snacks. For more information and the required waiver form to sign, go to <https://natureattheconfluence.com/event/wednesday-work-day-be-part-of-the-green-team/2022-05-04/>

Events for Fun

Plant Sale Season

Klehm Arboretum & Botanic Garden annual Plant Sale Fundraiser is back, with virtual shopping to pre-purchase plants online beginning Friday, April 8 and order pick-ups on May 6th and 7th in Klehm’s Garden Pavilion in Rockford, IL. Any plants not sold through online pre-orders will be available for purchase in-person on May 6th and 7th, but quantities and varieties will be limited. Go to <https://klehm.org> and search for the virtual plant sale to preorder.

Edgerton Hospital Spring Plant Sale 25 varieties of herbs. 30 varieties of tomatoes. 20 varieties of peppers. And other edibles. 9 a.m. to 6 p.m. on Friday, May 13 and 8 a.m. to 2 p.m. on Saturday, May 14.

Friends of the Arboretum Native Plant Sale, Saturday, May 14, 10 a.m. to 2 p.m. Visit the big tent on the lawn near the Visitor Center to shop for all your native plant gardening needs. More than 200 species of native grasses, woodland, prairie, and savanna plants, and trees and shrubs suitable for a variety of soil and light conditions, while supplies last. Organized by Friends of the Arboretum, open to the general public.

Wild Ones Native Plant Sale, Nicholas Conservatory & Gardens, Rockford, IL, Saturday & Sunday, May 14 and 15, 10 a.m. to 3 p.m. Wild Ones of Rock River Valley offer native plants at affordable prices just in time for spring planting! Find the address at <https://nicholasconservatory.com/>



Rock County Conservationists Native Plant Sale This popular event offers a selection of native plants at very reasonable prices (\$3/plant for non-RCC members). Preorder by May 9, and pick up your order at St. Paul's Lutheran Church in Beloit on Saturday, May 21 from 9-11 a.m. This year in addition to the native perennials, naturalist Dave Bendlin will be offering a few annual plants that—while not native—have proved to be hummingbird and butterfly magnets (Texas Sage, Tropical Milkweed, Mexican Sunflower, and a purple-flowered Salvia). **If you'd like a copy of the order form**, email Ruth Flescher at yafello2@gmail.com and she'll send it.



Dane County Master Gardener Plant Sale Sunday, May 22nd, 11 a.m. to 3 p.m. in the parking lot of the Extension Dane County Office in Madison. Hundreds of perennials for shade or sun, native plants, vegetable and herb starts, annuals, house plants and more. Plant Health Advisors and other master gardeners are on-hand to answer gardening questions. Plants are reasonably priced. Cash or check only. 5201 Fen Oak Dr, Madison WI. Find Plant Sale updates on www.facebook.com/uwexteachinggarden

Klehm Arboretum Celebrates National Public Garden Week, Friday May 6-Friday, May 13

Free admission, events for children, smart phone tour/scavenger hunt, plant sale and more.

Family Garden Day at Allen Centennial Gardens, Madison, Saturday, May 7th, 10:00 am to 1:00 p.m.

Drop in for this free, annual event! Bring your family, and explore campus gardens, greenhouses, and related facilities. Visit the DC Smith Greenhouse, Allen Centennial Garden, Steenbock and BioCommons, and Wisconsin Energy Institute. Explore hands-on activities with animals, insects, seeds, plants, and soil. Ask questions of Master Gardeners. Discover books for all ages about gardening, plants, soil, water and more. Take home plants and seeds for your own pizza garden—tomatoes, peppers, and Italian herbs! (while supplies last). Free parking is available in Lot 34 at 1480 Tripp Circle; in Lot 36 just west of Steenbock Library; and in Lot 41 at 1820 University Avenue near the WEI.

The Secret Life of Butterflies Exhibit at Nicholas Conservatory and Gardens, Rockford, May 1-29

Explore the wild, wonderful, and often strange world of butterflies and moths! See the whole lepidoptera lifecycle in action as caterpillars munch on leaves, butterflies emerge from their chrysalises, and moths from their cocoons. Get an up-close look at these amazing insects in the butterfly house as you're surrounded by native and exotic butterflies. Pre-registration highly encouraged! Tickets go on sale 2-4 weeks out. [Purchase Tickets](#)

**Wisconsin Arts and Peony Festival, Beaver Dam, WI,
Friday, June 3rd- Sunday, June 5th**

Garden enthusiasts will enjoy visiting the Ovans Peony Farm from 10 a.m. to 5 p.m. the days of the festival. Ovans is the largest stem cut peony farm in the state of Wisconsin, and currently has hundreds of different peony varieties which (hopefully!) will all be in bloom the weekend of the festival. Allen Centennial Garden will be participating with their new program Market Science. Visitors can stop by our stall and learn the math and science behind why bees collect honey in hexagonal combs as opposed to triangles or squares. Other cool things to check out include the Dodge County Center for the Arts, and the Great Wisconsin Quilt Show Botanical Quilt Challenge Exhibit. To learn more, click [here](#), then click on the Chamber of Commerce link.



More Training Available in May and Beyond

Looking for Level 2 MGV training--The Plants Plus modules? You can find them in the online classroom, Canvas, which you access with your UW NetID at <https://canvas.wisc.edu/> As of now, Plants Plus modules are ONLY available in Canvas. Check regularly for new modules!

Olbrich Botanical Gardens, Madison, WI

Classes are in person at the Gardens unless otherwise noted. Fees listed are for Olbrich Members/General Public. For more info, copy and paste this address: <http://www.olbrich.org/education/classes.cfm>

Registration for this class has closed, but try calling to see if they'll let you in at the last minute: 608-246-4550.

May 5, Small Native and Nativar Trees for Home Landscapes, online, 6-8 p.m., \$18/\$22. Register by April 28.



Registration is open for these classes. If a class is shown as "filled," see if you can get on a waiting list. Cancellations do occur.

May 12, Spring in the Woodland Garden, 6-7:30 p.m., \$14/\$18. Register by May 5.

May 14, Layering in the Landscape, 1-4 p.m., \$24/\$30. Register by May 4.

May 26, Reimagining Beauty at Olbrich Botanical Gardens, online, 7-8:30 p.m., \$12/\$15. Register by May 25.

May 28, Native Plants for Shady Areas, online, 1-3:00 p.m., \$18/\$22. Register by May 19.

May 31, Make Your Own Bonsai, 6-8:00 p.m., \$30/\$38. Register by May 24.

June 8, Early Summer Tips and Tricks from Olbrich's Herb Garden, 6-7:15 p.m., \$16/\$20. Register by June 1.

June 9, Weed Identification and Management, online, 5:30-7:30 p.m., \$18/\$22. Register by June 2.

Wisconsin Horticulture Update, Fridays at 9:30 a.m. or Recordings in the Canvas Classroom

The Wisconsin Horticulture Update is a 1-hour weekly review of statewide growing conditions, degree days, insect and disease activity and more, plus special topics. Updates are already in the Canvas Classroom for the expected outlook for 2022 on insects and plant diseases. May 6 will cover the general forecast for 2022 on invasives and weeds. After May 6, the update will go back to its standard weekly format, which include updates from both Brian and PJ's labs (Plant Diseases and Insects, respectively) as well as updates from around the state. No registration required. Recordings will be posted in the Canvas Classroom, so you can catch up on any you missed. Use this link on a

Friday morning to log into the live presentation (goes directly to the Zoom meeting).

[Log into the WHU on Friday at 9:30am](#)

Soils, Soil Testing and Fertilizers, Wednesday, May 4, 9-11:00 a.m., online

Good soils are vital to growing healthy plants. This class will review physical and chemical structure of soils, pH, organic matter and techniques for improving the soil you have. We will also cover soil testing and test results. There will be short activities on understanding and selecting fertilizer products (both organic and traditional,) reading labels and calculating application rates as well as interpreting soil test results. Dane County Extension Green Thumb Gardening Series. Fee: \$12. Register at <https://www.eventbrite.com/e/2022-green-thumb-gardening-spring-series-online-registration-194611717887>

History of Forest Pest Outbreaks in North America, Wednesday, May 4, 2-3:00 p.m., online

North America has a history of exotic pests that extirpate individual tree species, with Emerald Ash Borer serving as our modern example. In our current, ever-globalizing society there is significant risk for future outbreaks that may impact all of our trees from the urban forest to our woodlands. This presentation will examine past outbreaks on our continent to compare and contrast what we have learned

historically with the current pests threatening our native trees. The speaker is Ryan Pankau, Horticulture Educator, University of Illinois. Free, but registration required. Go to <https://web.extension.illinois.edu/registration/?RegistrationID=25029>



Lilacs Garden Tour, UW-Arboretum, Madison, Saturday, May 7, 1-3:00 p.m.

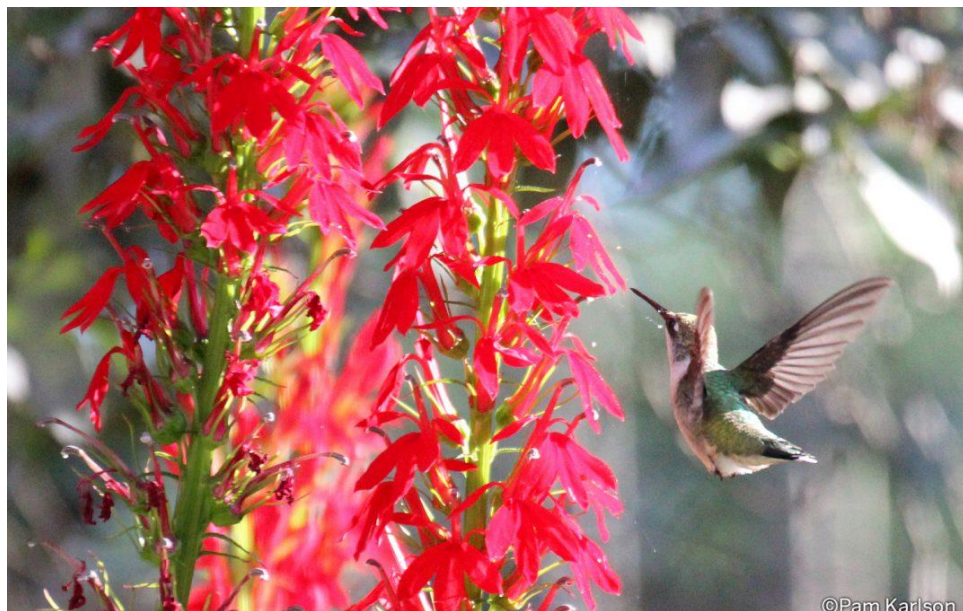
Established in 1935, the Longenecker Horticultural Gardens' lilac collection is one of the largest in the country. Join David Stevens, garden curator, to explore lilac history, lore, culture, and color. Free, no registration required. Meet at the Visitor Center. NOTE: This tour may be rescheduled if the season has not advanced enough for the lilacs to be in bloom. Check the Arboretum's website before heading out! <https://arboretum.wisc.edu/visit/events/>

Mother's Day Wildflower Walk, Sunday, May 8, 10-11:30 a.m., Welty Environmental Center

For nature-lovers, there is no better way to celebrate the final arrival of spring than a hike in the forest to observe the blooms of spring wildflowers. On this hike we'll look for the blooms of Dutchman's breeches, hepaticas, violets, spring beauty, wild ginger, and anemones. Dependent on the yearly variation in bloom time, there may also be columbine, blue wood phlox, trilliums and Jack in the Pulpit. Big Hill Park is the perfect place for this type of hike because it contains one of the best wildflower displays in Rock County. Led by Dave Bendlin. Note: This is an active program that will require walking on various terrains throughout Big Hill Park. Free, but registration required. Go to https://weltycenter.org/event/mothers-day-wild-flower-walk-5-8-22/?instance_id=3586

Birds in the Garden: Creating and Enjoying a Bird Oasis, Monday, May 9, 6-8:00 p.m., Klehm Arboretum, Rockford, IL

Inviting birds into gardens by creating habitat is a joyful way to connect with nature and help support bird populations. This presentation features Pam Karlson's photos from her Chicago bird garden she created, illustrating how it's possible to attract over 100 bird species. Tips include landscape enhancements, practices and plant selection, with an emphasis on native plants. Chicagoland's importance along the migratory route, bird species diversity, habitat, diet/foraging, nesting, supplemental support and community science will also be discussed. Doug Tallamy's "Nature's Best Hope: A New Approach to Conservation That Starts in Your Yard", and Emily Murphy's "Grow Now: How We Can Save Our Health, Communities, and Planet – One Garden at a Time" includes Pam's garden, exemplifying the power of urban lots. Registration recommended. Register [here](#).



Best Practices for Watering Lawns and Gardens, Tuesday, May 10, noon-12:30 p.m., online

Do you know that there is a right way and a wrong way to water your plants? Join us to learn about the water requirements for most plants, how proper watering practices can prevent plant diseases, and different ways to conserve water for your yards and gardens. Presented by Lisa Johnson, Horticulture Outreach Specialist, Dane County. [Click here to register](#)

Native Bees of Wisconsin, Tuesday, May 10, 6:30-7:30 p.m., online

Speaker: Susan Carpenter, UW-Arboretum's Native Plant Gardener. Wisconsin is home to 500 kinds of native bees! Discover the diversity and life histories of these important pollinators. Learn how you can create and manage habitat for them, using native plants and bee-friendly gardening practices. Free, but registration required. You will be emailed the link to join before the event. The link to register can be found at: <https://www.oregonpubliclibrary.org/adults/bees-wisconsin>

Trees and Storm Damage, Wednesday, May 11, 2-3:00 p.m., online

Trees are wonderful plants to incorporate into our landscape and have in our communities but what happens when midwestern weather events threaten the health and safety of these plants? Snow, and ice can weigh heavy on trees resulting in branch failure. Wind events can whip and twist limbs, influencing structural stability of tree canopies. Two diametrically opposed climate events of drought and flooding may not produce immediate symptoms of stress but may emerge over time. Join us as we explore the factors of weather that impact our trees and how to respond in the aftermath of a storm to protect people and treat storm damaged trees. Presenter: Emily Swihart, Horticulture Educator, University of Illinois. Free, but registration required. Go to <https://web.extension.illinois.edu/registration/?RegistrationID=25029>

Monarch Biology and Conservation, Thursday, May 12, 10-11:15 a.m., online

This is a FREE virtual event hosted by the Verona Senior Center. Join Director of the UW-Madison Arboretum's Karen Oberhauser as she discusses an array of topics related to monarch butterflies. These topics include basic biology, conservation, climate change, and natural enemies. No registration is needed for this event, access it at this link:

<https://us02web.zoom.us/j/82884219160?pwd=WWFoVONwcXhtVDNLakxUOXZEUmNPdz09>



Crabapples Garden Tour, UW-Arboretum, Madison, Saturday, May 14, 1-3:00 p.m.

With over 200 trees, the Longenecker Horticultural Gardens crabapple collection is the most up to date in the country. Learn why crabapples are the most planted flowering tree in the Midwest with David Stevens, garden curator, who will highlight some of his favorite selections. Free, no registration required. Meet at the Visitor Center. NOTE: This tour may be rescheduled if the season has not advanced enough for the trees to be in bloom. Check the Arboretum's website before heading out!

<https://arboretum.wisc.edu/visit/events/>

Nature Hike, UW-Arboretum, Madison, Sunday, May 15, 1-2:30 p.m.

Learn about the land, plants, animals, fungi, phenology, and ecology. Geared for adults, these longer walks may cover some sloping terrain. Wear sturdy closed-toe shoes and come seasonally prepared for weather and insects. Walks take place rain or shine, except in unsafe weather. Free, no registration required. Meet at the Visitor Center.

Growing Strawberries, Raspberries, & Blueberries, Wednesday, May 18, 9-11:00 a.m., online

Learn about planting, fertilizing, pruning and overwintering these three types of fruit crops. Variety recommendations, insect/disease management and some troubleshooting will be included as well. You will receive electronic copies of Learning Store publications as well as learning about other handy online resources. Speaker: Lisa Johnson. Dane County Extension Green Thumb Gardening Series. Fee: \$12. Register at <https://www.eventbrite.com/e/2022-green-thumb-gardening-spring-series-online-registration-194611717887>

Strategies for Identifying and Managing Insect Pests, Wednesday, May 18, noon-12:30 p.m., online

Even though insects can cause damage to our plants, not all of them are bad! Learn how to look for signs of insects, why identification is required to know if an insect is beneficial or a pest, and what you can do about it! We will also talk about different control methods and options. Presented by: PJ Liesch, Assistant Faculty Associate & Extension Entomologist. UW-Madison Department of Entomology.

[Click here to register](#)

Hostas: Ordinary or Extraordinary?

Wednesday, May 18, 6-7:00 p.m.

Do you think hostas are just those “boring green plants” that grow in the shade? Guess again! Learn about plant selection, care, and companion plants, and how to maximize the potential of these beauties in your garden. Presenter: U of I Extension Master Gardener Constance McCarthy. Free, but donations are welcomed. This session will be held at the U of I Extension office in Winnebago County, 1040 N. Second Street, Rockford (directly south of Nicholas Conservatory). Register at <https://web.extension.illinois.edu/registration/?RegistrationID=25638>



Hummingbirds, Thursday, May 19, 6-7:30 p.m., online

Putting out hummingbird feeders isn't necessary to attract and keep hummingbirds coming back to your garden. Understanding the true needs and behaviors of these tiny winged gems is important for a proper hummingbird garden. Join Peggy Doty, University of Illinois Extension Educator, to learn how to capture their attention early so you can enjoy hummingbirds all season. Sponsored by Klehm Arboretum. Free, but registration required. Register [here](#)



Square Foot and Raised Bed Gardens: Gardening Made Accessible for All, Monday, May 23, 7-8:30 p.m., online

Square-foot gardening in raised beds has been around since the 1970's. But that is not the only way to garden in raised beds! This talk will give you some ideas for creating your own raised gardening beds, provide a recipe for soil in raised beds, advice on selecting varieties for raised for raised beds. We will also briefly touch on some adaptive tools and techniques for gardening as we age. This is a FREE, virtual talk hosted by Outagamie County Master Gardeners. The speaker is Dane County Extension Horticulture Outreach Specialist, Lisa Johnson. Look for connection information within two weeks of the event at <https://today.wisc.edu/events/view/167799>

Sun & Shade Container Gardening, Monday, May 23, 6:00-7:00 p.m.

Design an exciting container! Learn which plants are good Thrillers, Fillers and Spillers. You will get to chose whether you want to make a Sun or Shade container garden. Cost of \$30 covers the cost of the containers, soils and plants. Presenter: Ann Somers, U of I Extension Master Gardeners. This session will be held at the U of I Extension office in Winnebago County, 1040 N. Second Street, Rockford (directly south of Nicholas Conservatory). Register at <https://web.extension.illinois.edu/registration/?RegistrationID=25638>

Introduction to Insects in the Garden, Wednesday, May 25, 9-11:00 a.m., online

Insects are an extremely diverse and critically important group of animals. In this class, PJ Liesch, Director of the UW-Madison Insect Diagnostic Lab will discuss the basic anatomy, physiology, and ecology of these creatures and take a brief look at the main groups of insects. This will help you in identifying insects in your garden, knowing beneficial predator insects from plant-eaters, identifying and supporting pollinators and understanding management techniques. Speaker PJ Liesch. Dane County Extension Green Thumb Gardening Series. Fee: \$12. Register at <https://www.eventbrite.com/e/2022-green-thumb-gardening-spring-series-online-registration-194611717887>

Totally Tomatoes, Perfect Peppers, Wednesday, May 25 6:00 pm – 7:00 pm

This class will help you determine what varieties to grow, diseases and insects to look out for, methods to trellis for success, and trouble-shooting of these two popular summer vegetables. This is a great session for novice and experienced gardeners alike. Presenter: Grant McCarty, University of Illinois Extension Local Foods and Small Farms Educator. Free but donations are welcomed. This session will be held at the U of I Extension office in Winnebago County, 1040 N. Second Street, Rockford (directly south of Nicholas Conservatory). Register at <https://web.extension.illinois.edu/registration/?RegistrationID=25638>



Strategies for Identifying and Managing Plant Diseases, Tuesday, May 31, noon-12:30 p.m., online

Plants can be affected by fungus, bacteria, viruses and other factors. Join us to learn about how to look for symptoms of plant disease and what you can do. We will also talk about different control methods and options. Presented by: Amanda Gevens, Chair, Professor & Integrated Extension Specialist, UW-Madison Plant Pathology Department. [Click here to register](#)



Monarch Larva Monitoring Project: Northern States, Saturday, June 4, 10 a.m.-3 p.m., online

Learn how to collect data that contributes to knowledge of monarch populations. Participants will learn about monarch biology, monitoring procedures, and data entry protocols, and have time to ask questions of experts. Trainings are relevant for both newcomers and active participants in monarch citizen science projects. A one-hour break is included. Select training based on geographic interest. Advance registration required. Fee: \$45. Register at <https://donate.monarchjointventure.org/event/2022-monarch-larva-monitoring-project/e378139>

No Mow May, *continued*

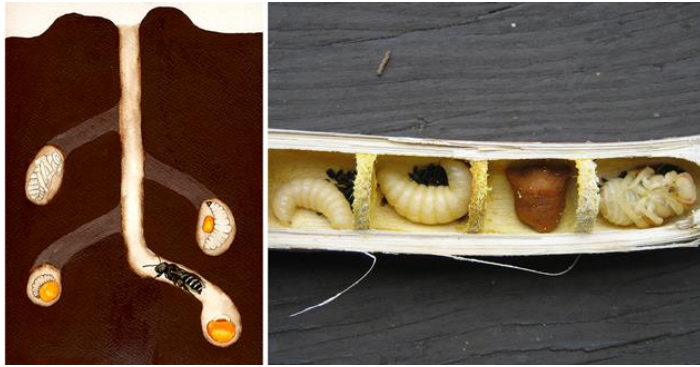


Figure 3- The life cycle of the native bee.

University to establish places in parks and public spaces that could be havens for native plants to support pollinators all summer long.

In order to help the endangered pollinators there are some simple things Del Toro suggests you do:

1. Find out what bees are visiting your yard and learn how to make a home for them. [Wisconsin Bee Identification Guide](#).
2. Create, Restore, and Manage Habitat - From expansive meadows to backyard butterfly gardens and everywhere in between - every landscape can be optimized to support pollinators. The University of Wisconsin-Madison can provide you with science-based fact sheets that will help you help the pollinators. One of my favorites is [Supporting Native Bees: Our Essential Pollinators](#).
3. Provide Access to Nesting Sites - Like us, pollinators need a place to call home. Nesting resources can take many forms - from natural to man-made. Visit Xerces.org and access this article on pollinator habitat. [Moving beyond flowers: Natural nesting habitat for bees and other insects](#).
4. Managing Pests While Protecting Pollinators - Whether conventional or organic, all pesticides can pose a risk to pollinators if not used properly. Learn about the risks pesticides pose to pollinators, what measures can be used to reduce harm, and the many alternatives available to foster alternative methods of pest control. Take a little time and read [the Wisconsin Pollinator Protection Plan](#).

There are many factors hurting bee populations. Climate change and irresponsible use of pesticides and herbicides lead the list. The most significant stressor overall, however, is habitat loss.

To become part of the solution learn as much as you can about pollinators. What do they eat? Where do they find water? What kind of environment is most congenial to them? What plants do they like best? How can I help them?

Israel Del Toro is a biology professor at Appleton's Lawrence University. He encountered the concept of a No Mow May within an environmentalist group in the United Kingdom, and was the driving force behind Appleton's pioneering initiative. He has also worked with the city of Appleton and Lawrence



Figure 2- Israel Del Toro - the professor who brought No Mow May to the United States.

- Pick the Right Plants – Visit Xerces.org website for research-based, regionally appropriate plant lists and guides to help you pick the very best plants for pollinators. Wisconsin falls in the Great Lakes listing of pollinator plants. You can find it here: [Great Lakes Region Plant List](#).

As of this writing more Wisconsin cities have joined No Mow May. To date they include: Appleton, Cross Plains, De Pere, Egg Harbor, Fort Atkinson, Fox Crossing, Green Bay, Greenfield, Hortonville, Kaukauna, La Crosse, Medford, New Holstein, Oshkosh, Rib Mountain, Rockland, Stevens Point, Sun Prairie, Superior, Verona, Wausau and Wisconsin Rapids. Wisconsin isn't alone. The initiative has also moved to Ann Arbor, Michigan; Bangor, Maine; and into New York's Hudson Valley.

Not all is hearts and flowers with the initiative, however. Many communities have ordinances that require residents to keep their lawns mowed to a certain height, which could cut off buds or mature flowers, depriving pollinators of food. People who refuse to mow during the month of May could be subject to fines for breaking the law. Check with your municipality to find out what you could be up against should you decide to participate in No Mow May.

Mary Kay Thompson

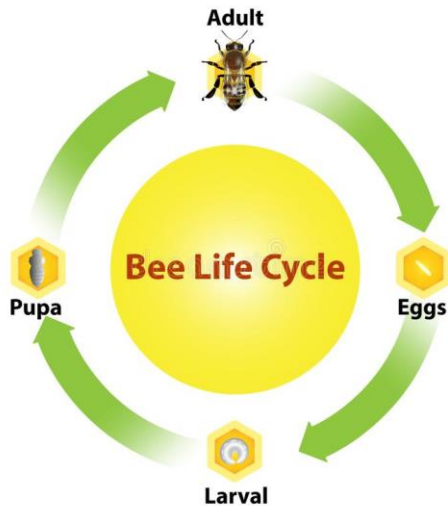
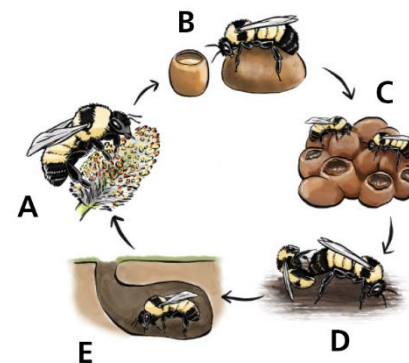


Figure 4- The life cycle of the honey bee. (left)

Figure 5- The life cycle of the bumble bee. (right)



To learn more about the No Mow May initiative visit the Appleton website: <https://www.byobeez.org/nomowmay.html>

The **Master Gardener Update** is developed by and distributed online monthly by the Rock Prairie Master Gardener Association, Incorporated, for master gardener volunteers and other interested people who have ties to Rock County, Wisconsin. Current officers of the association include Ruth Flescher, president (yafello2@gail.com); Mary Kay Thompson, vice president (mastergardenermary@gmail.com); Sue Wood, Secretary (woodslibrarymedia@gmail.com) and Deb Grams, treasurer (debgrams@yahoo.com).

Mailing Address: Rock Prairie Master Gardener Association, c/o Sue Wood
1616 Holly Drive
Janesville, WI 53546